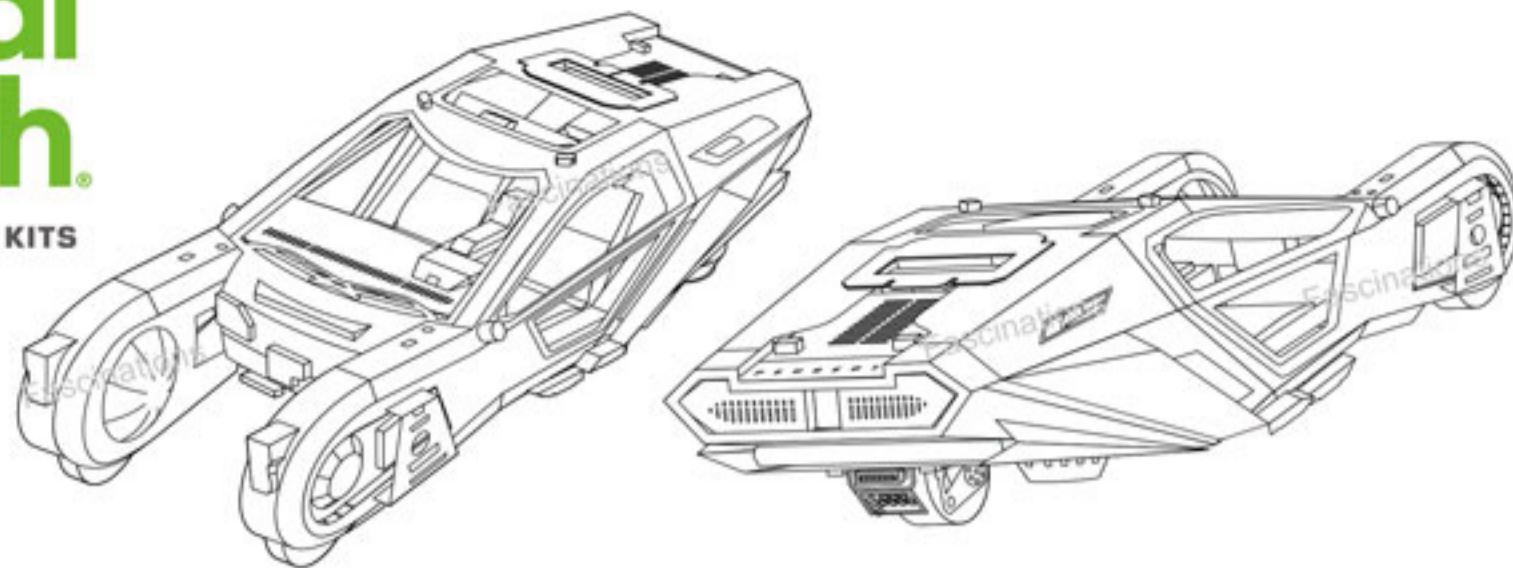


Metal Earth

3D METAL MODEL KITS



© 2017 Alcon, WBEI and CPII.
Blade Runner 2049 Spinner Car



It is highly recommended that you visit www.metalearth.com/2049spinner for helpful assembly tips and turnaround images of the assembled model before assembling your own!

Legends:

- Engraved side
- Non-engraved side
- Attention point
- Insert tab and bend 90 degrees
- Insert tab and twist 90 degrees

Recommended tools:

-Tweezers or needle nose pliers: helpful for folding parts, bending and twisting tabs.

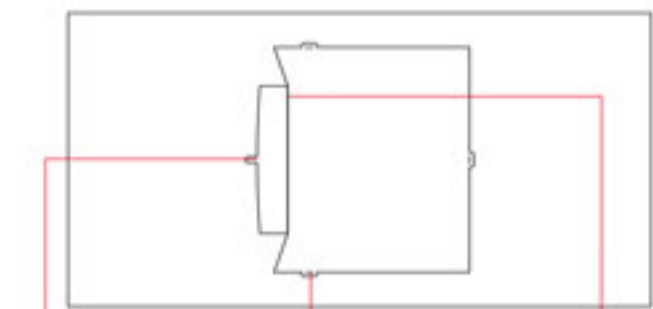


-Wire cutters: helpful for taking parts from the metal sheets.



Assembly tip:

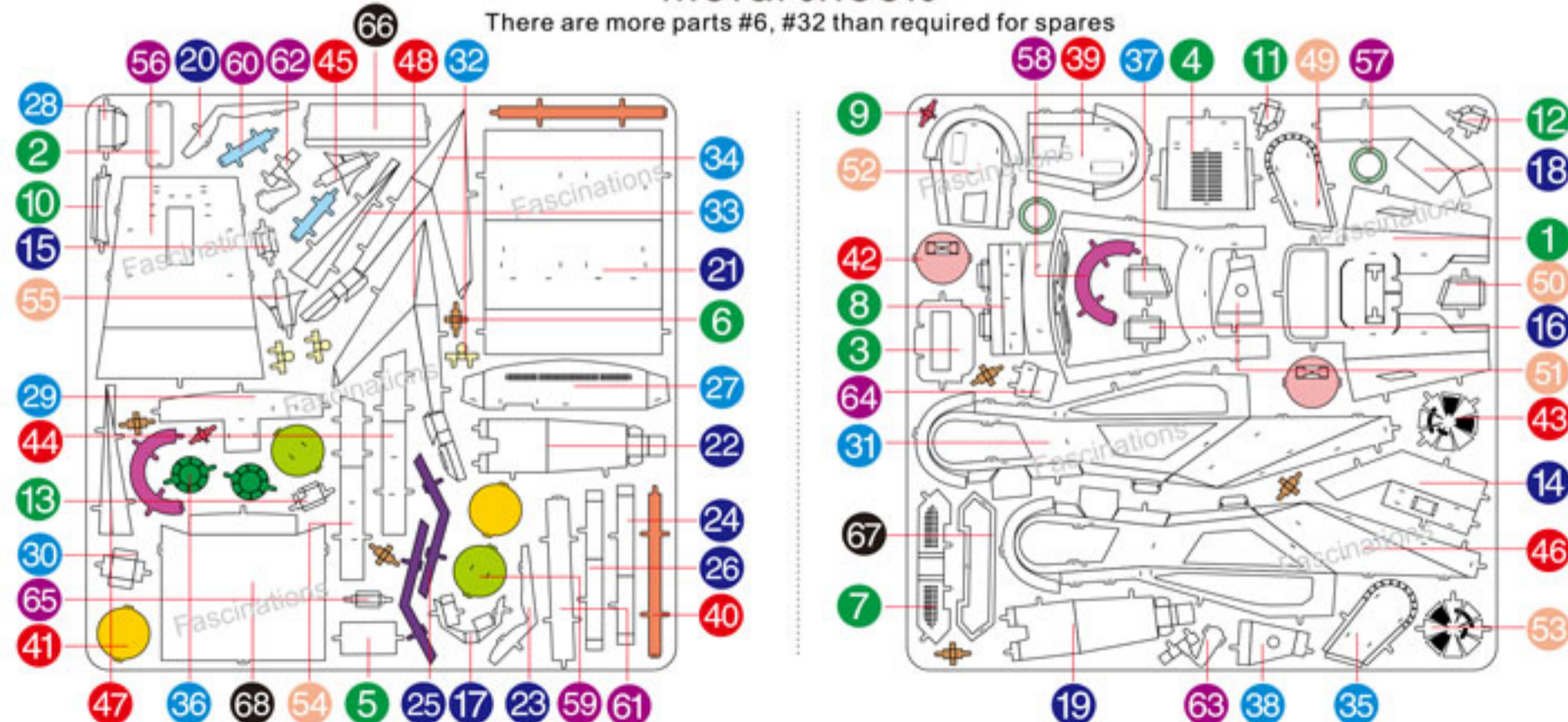
If needed, slightly twist tabs to hold parts together then untwist and bend them down for a nice finish



Insertion tabs are inserted and then folded
Insertion holes
Fold lines can be seen as shown here

Metal sheets

There are more parts #6, #32 than required for spares



In order to avoid possible injury from sharp edges, please carefully discard the metal sheets after parts have been removed

TIPS:

- Only taking out parts as you need them, do not taking out all parts at the beginning.
- Having a small container handy to keep parts after taking them out is recommended.

Assembly Flow Chart

