



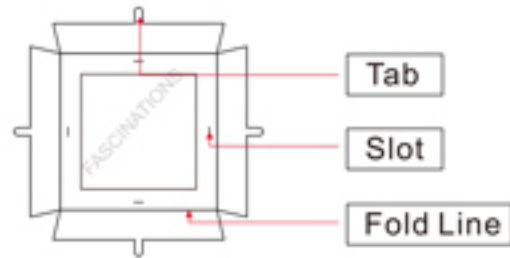
It is highly recommended that you visit [www.metalearth.com/360/icx011](http://www.metalearth.com/360/icx011) to see the completed model before assembling your own

ICX011

## Eiffel Tower



### TO CREATE THE BEST CONNECTIONS



**Legends:**

- Engraved side
- Non-engraved side
- Attention point
- Insert tab and bend 90 degrees
- Insert tab and twist 90 degrees

**Recommended tools:**

-Wire cutters: helpful for taking parts from the metal sheets.



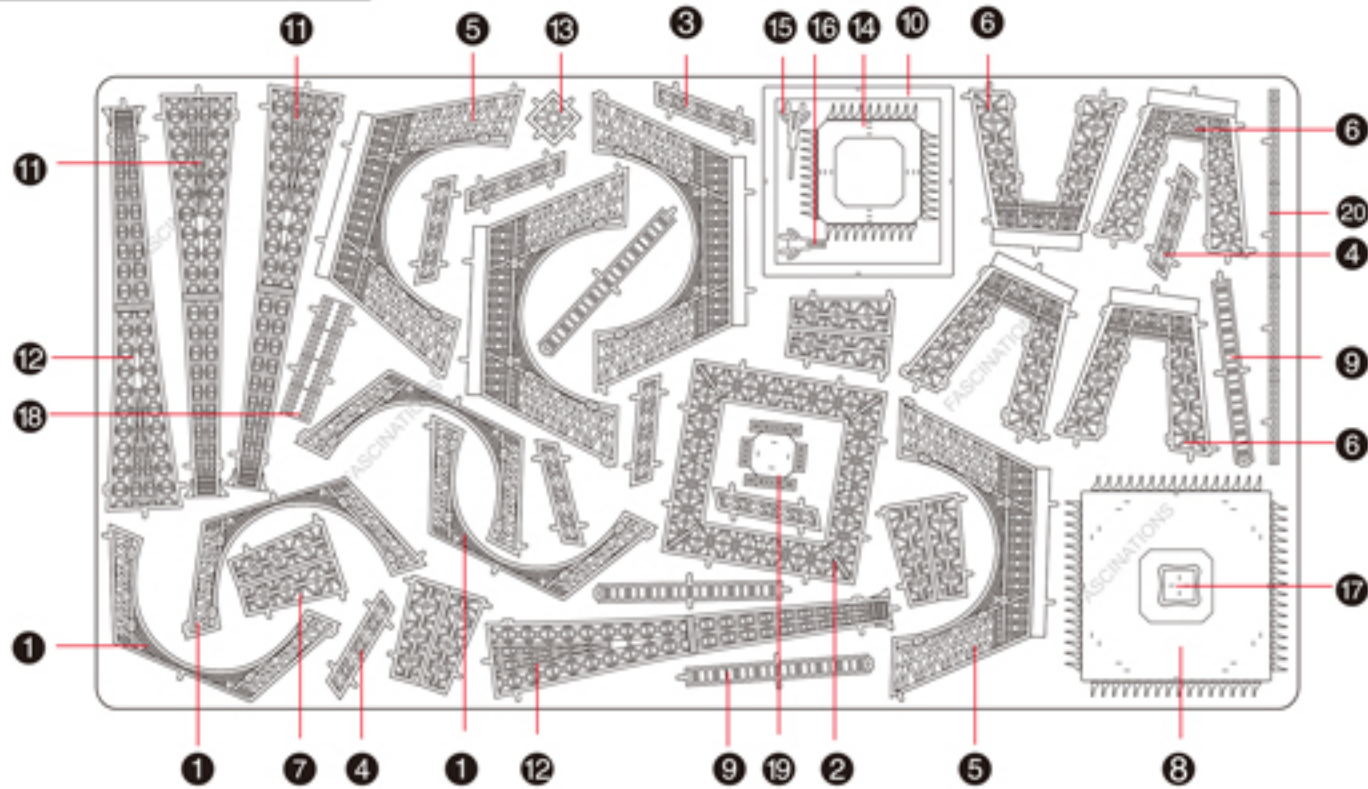
-Tweezers or needle nose pliers: helpful for folding parts, bending and twisting tabs.



**Assembly tip:**

If needed, slightly twist tabs to hold parts together then untwist and bend them down for a nice finish

### METAL SHEET



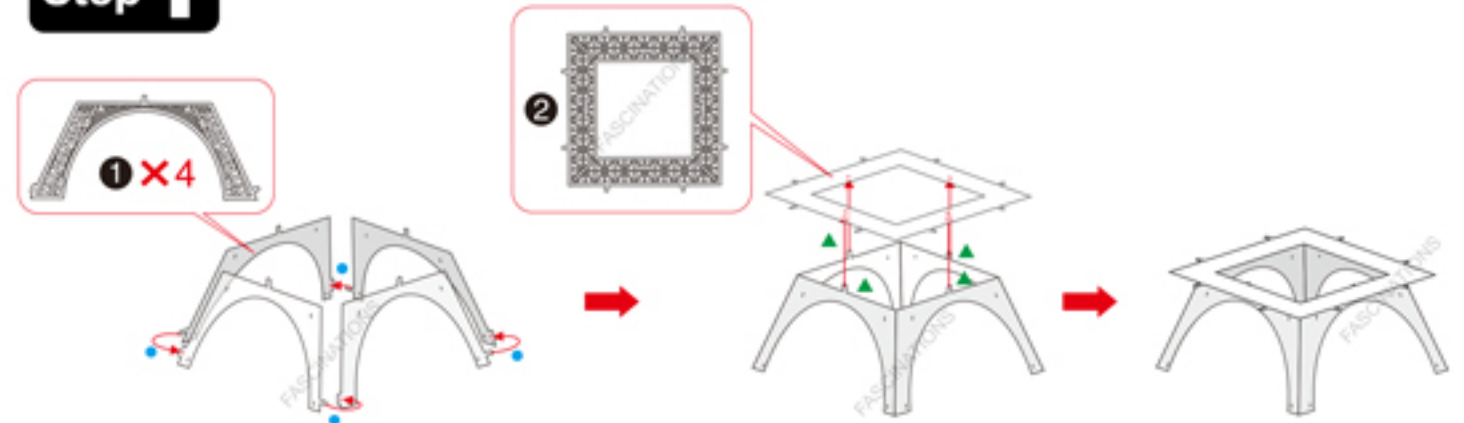
In order to avoid possible injury from sharp edges, please carefully discard the metal sheet after parts have been removed.



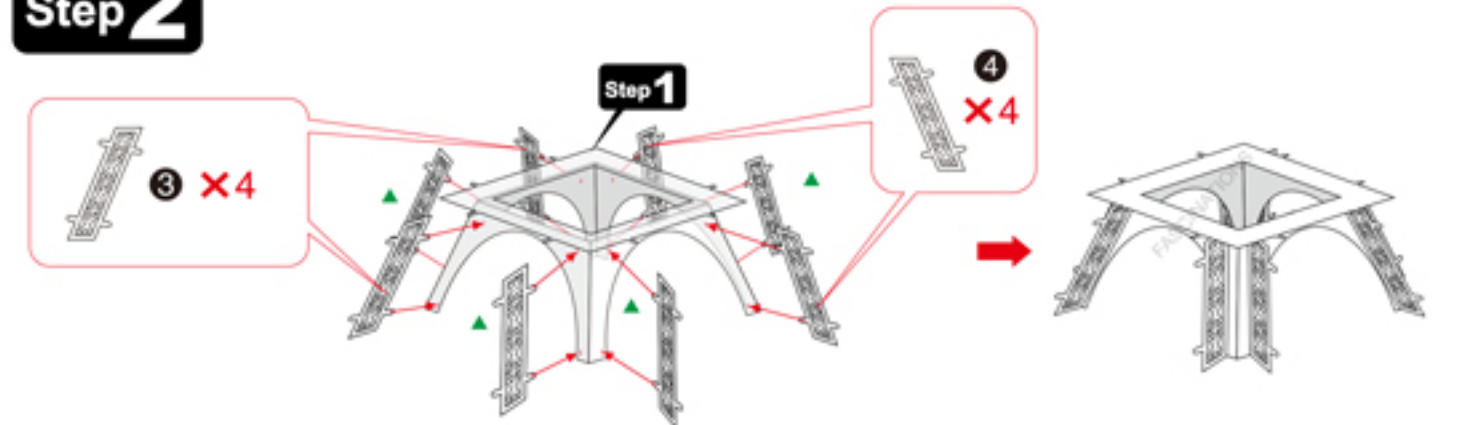
Go to [www.metalearth.com/360/icx011](http://www.metalearth.com/360/icx011) to see the zoomable PDF version of this instruction sheet

### ASSEMBLY STEPS

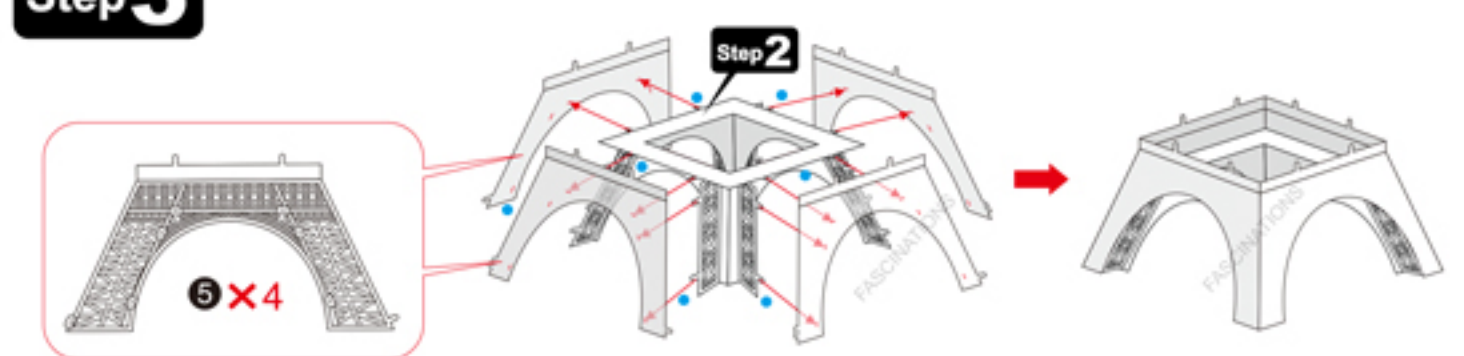
#### Step 1



#### Step 2

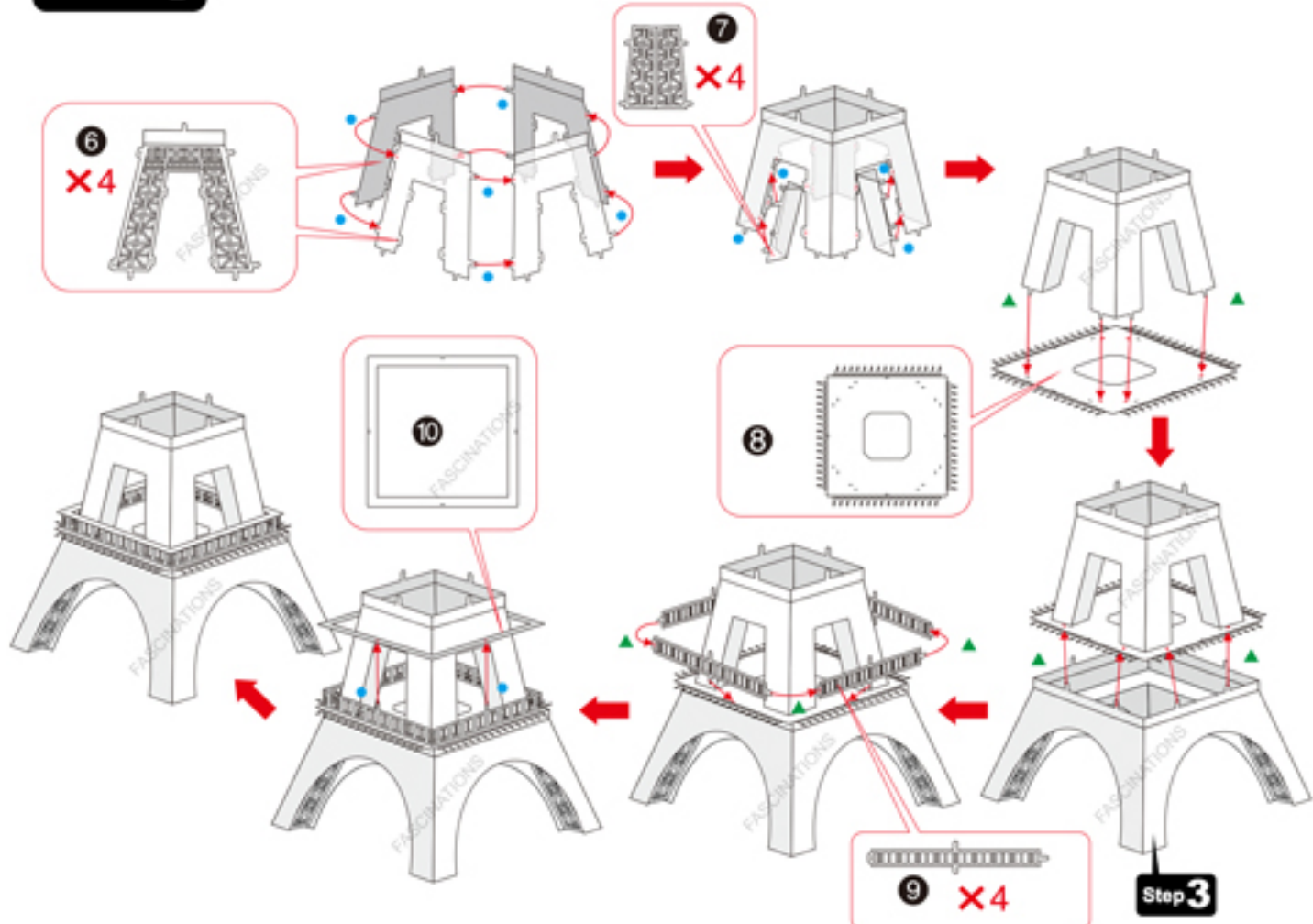


#### Step 3

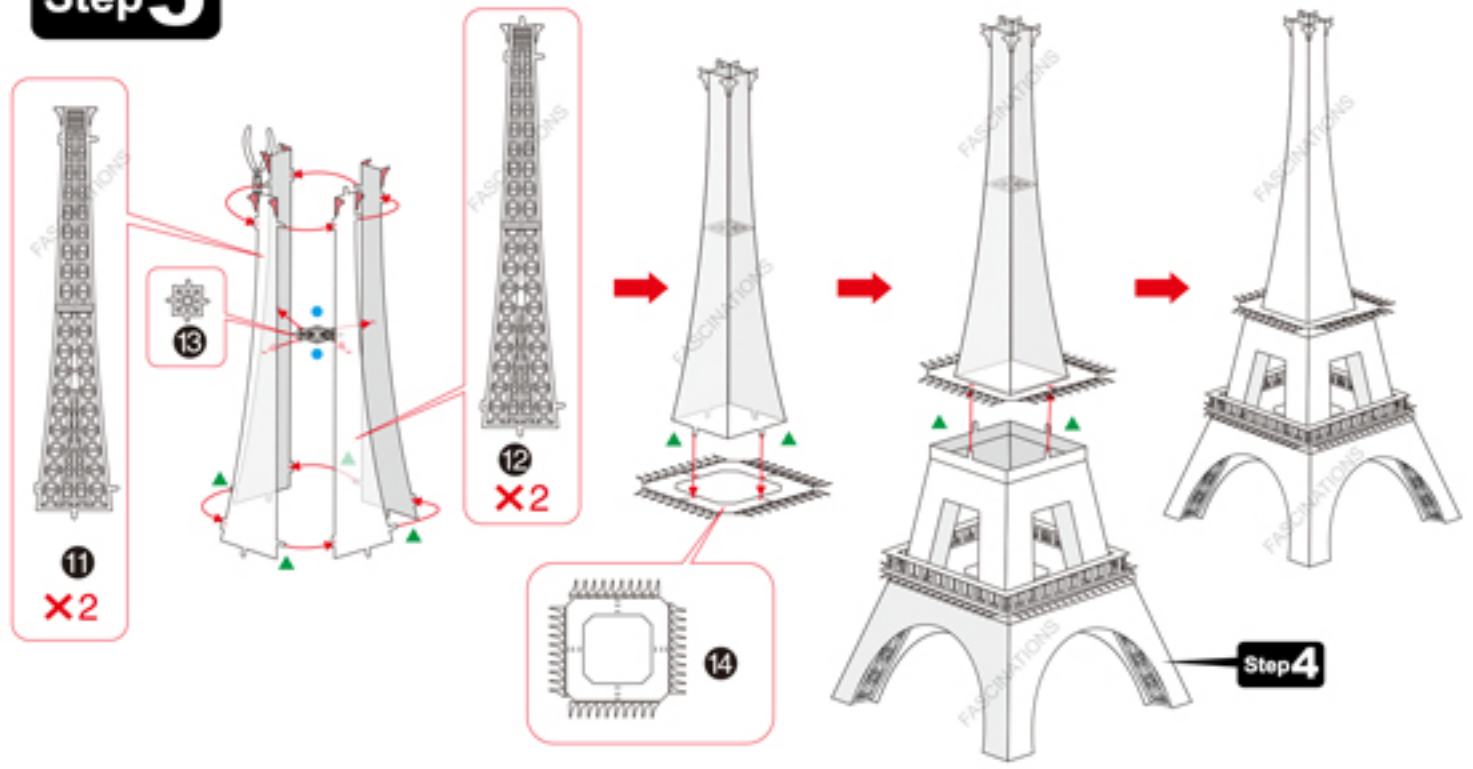




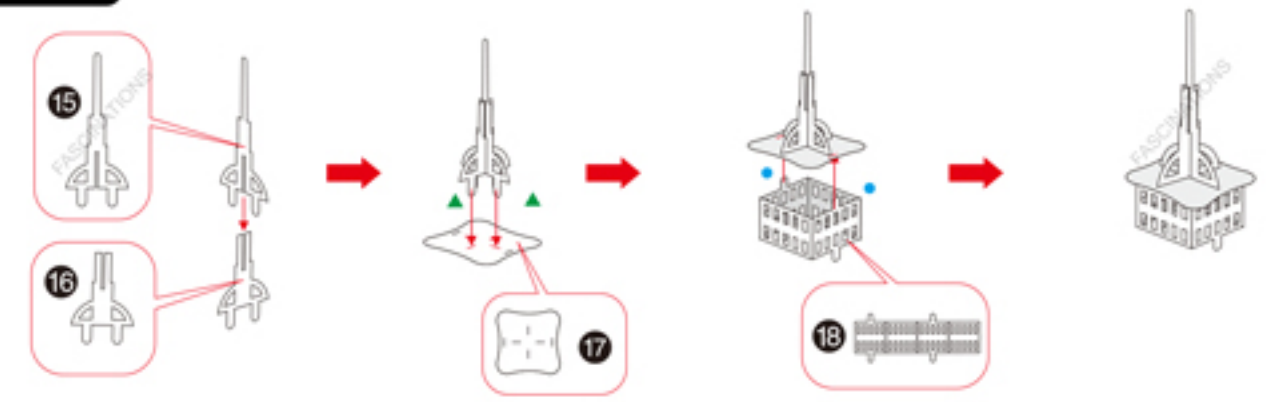
### Step 4



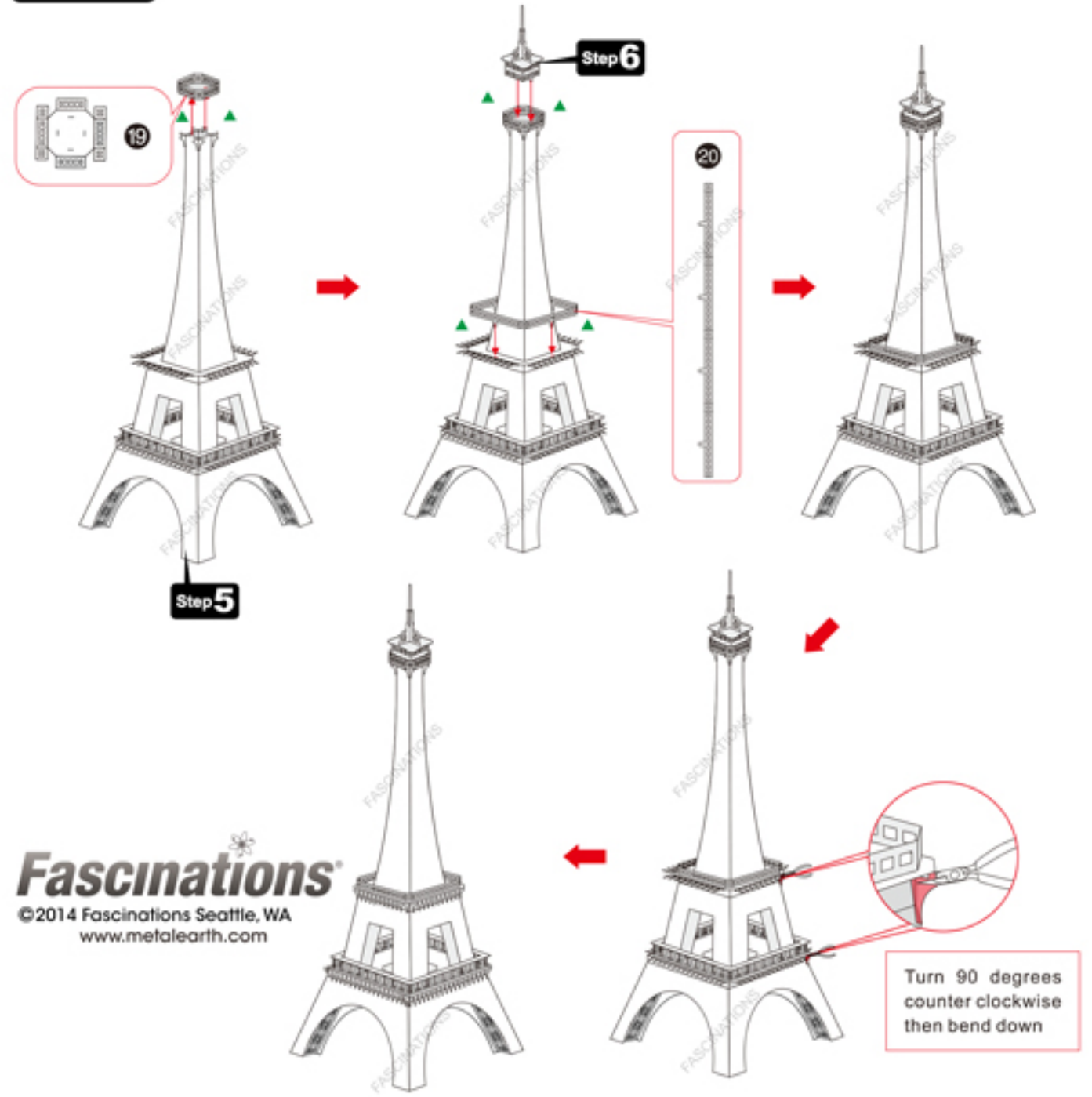
### Step 5



### Step 6



### Step 7



**Fascinations**  
 ©2014 Fascinations Seattle, WA  
 www.metalearth.com