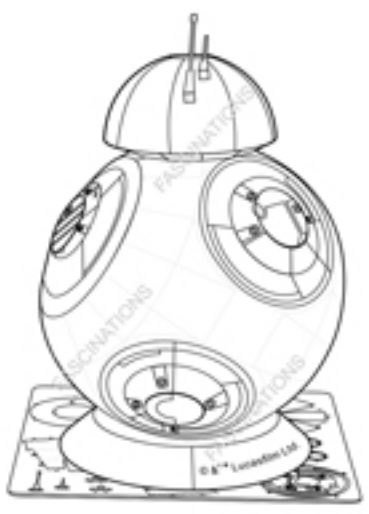




# Metal Earth.

3D METAL MODEL KITS



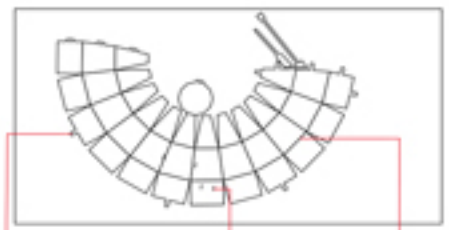
**BB-8™**

Item No. MMS271

**360°**  
view



It is highly recommended that you visit [www.metalearth.com/360/mms271](http://www.metalearth.com/360/mms271) to see the completed model before assembling your own



Insertion tabs are inserted and then folded  
Insertion holes  
Fold lines can be seen as shown here

**Legends:**

- Engraved side
- Non-engraved side
- Attention point
- Insert tab and bend 90 degrees
- Insert tab and twist 90 degrees

**Assembly tip:**

If needed, slightly twist tabs to hold parts together then untwist and bend them down for a nice finish

**Recommended tools:**

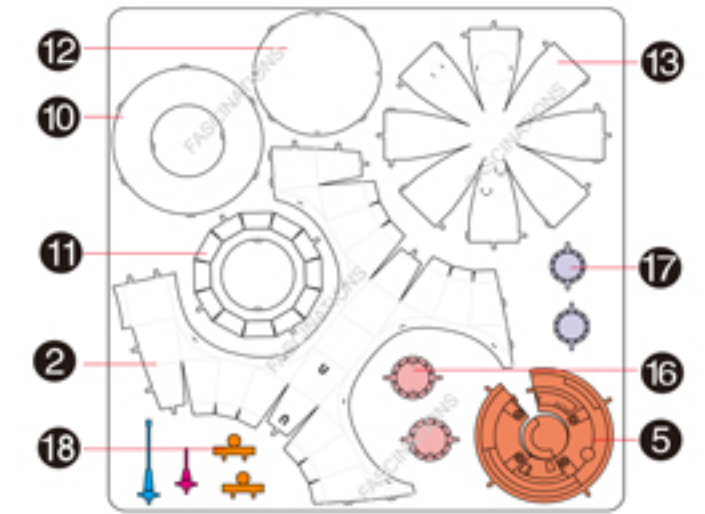
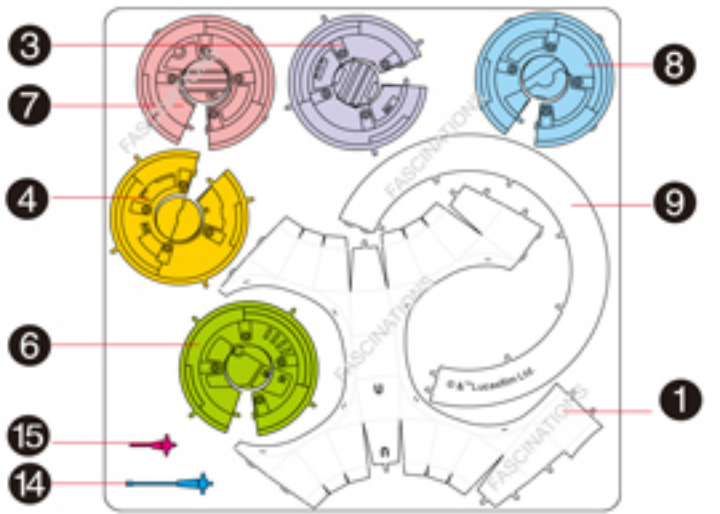
-Wire cutters: helpful for taking parts from the metal sheets.



-Tweezers or needle nose pliers: helpful for folding parts, bending and twisting tabs.

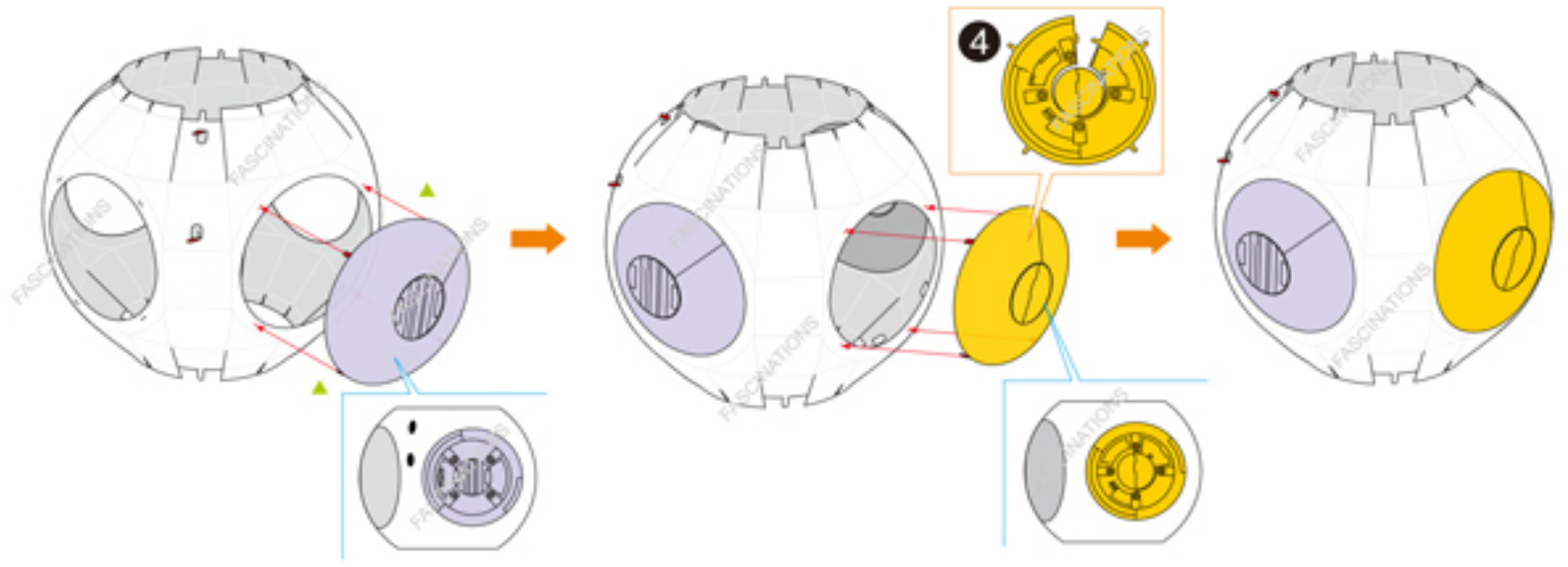
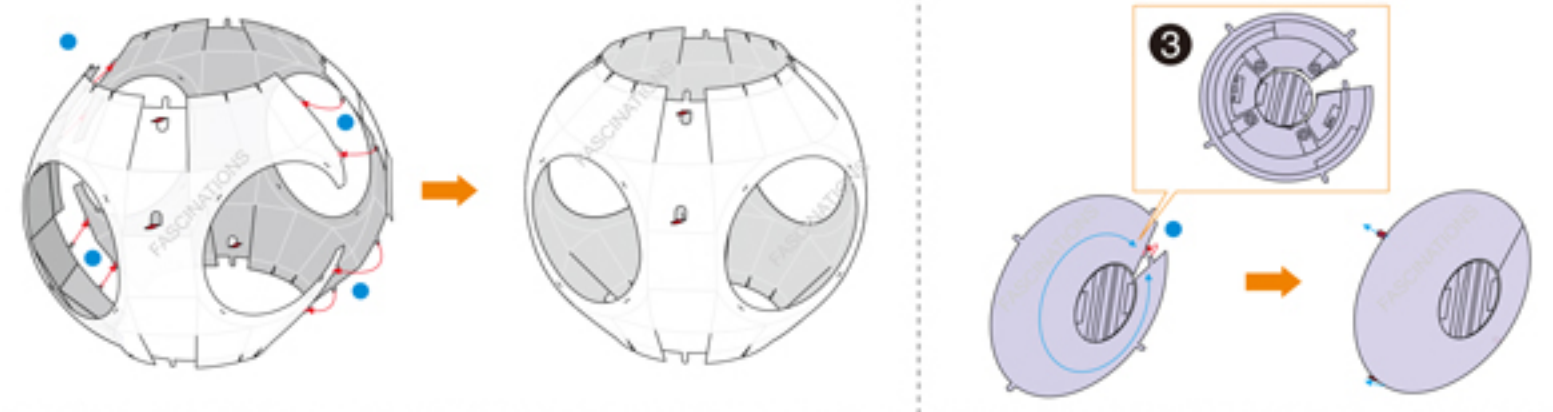
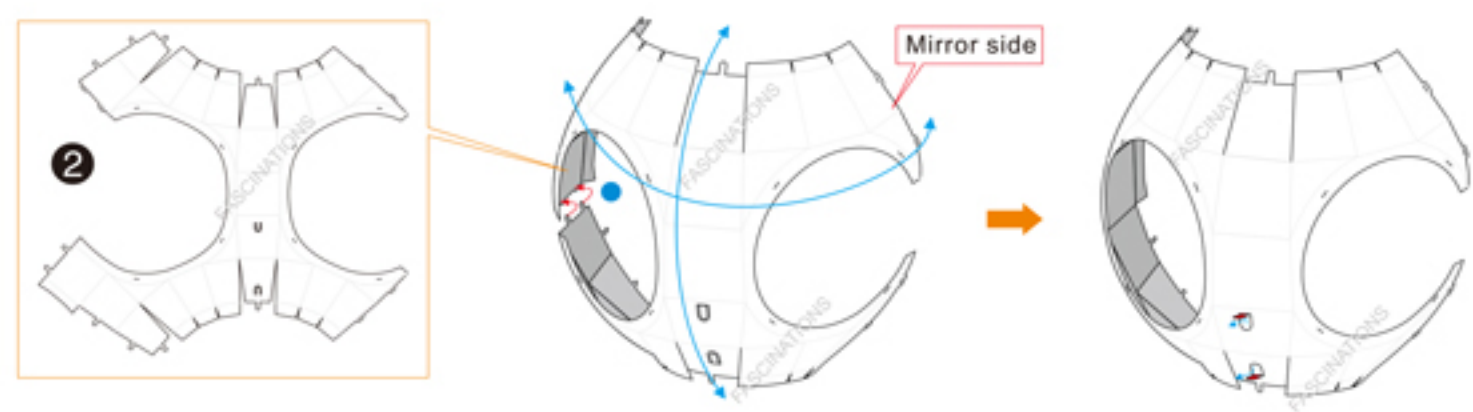
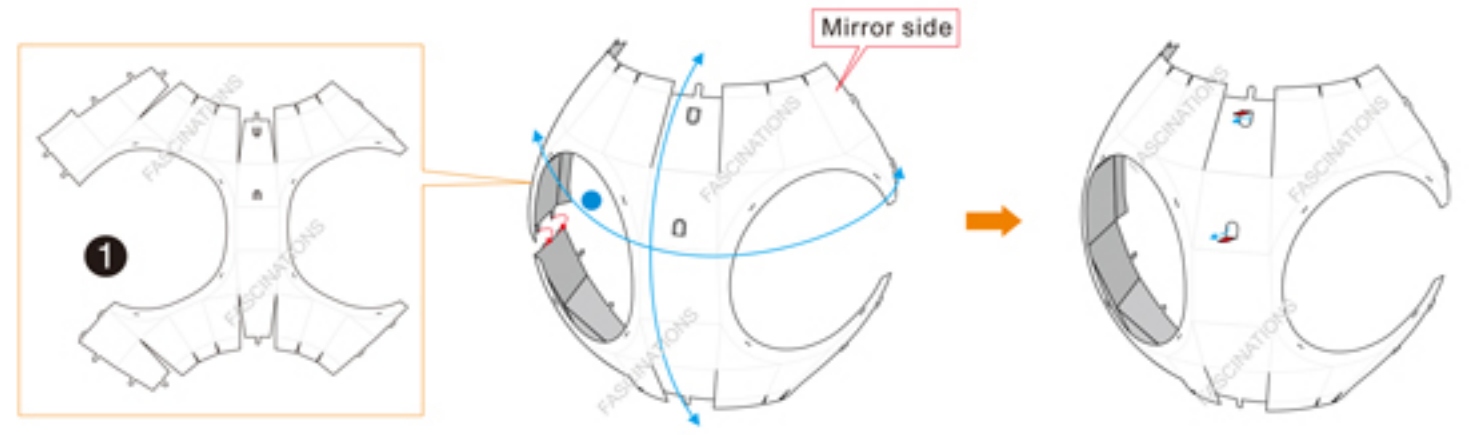


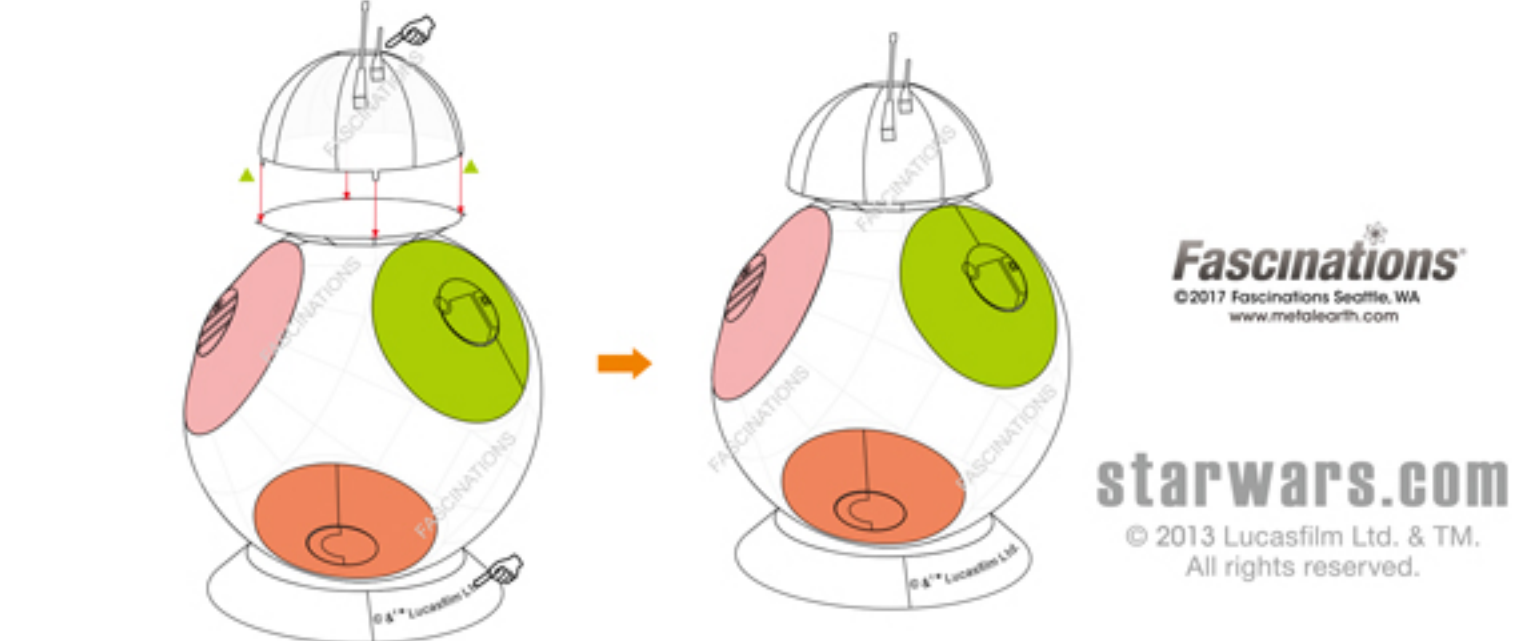
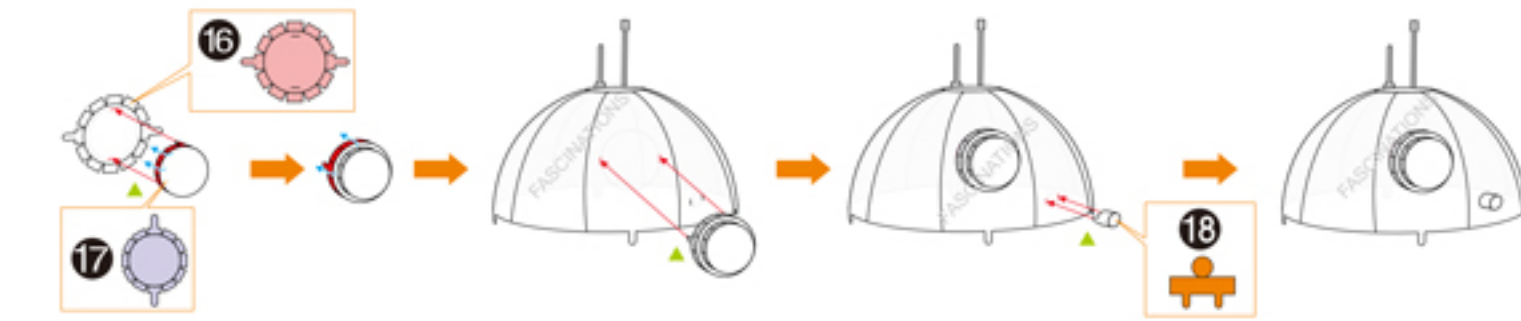
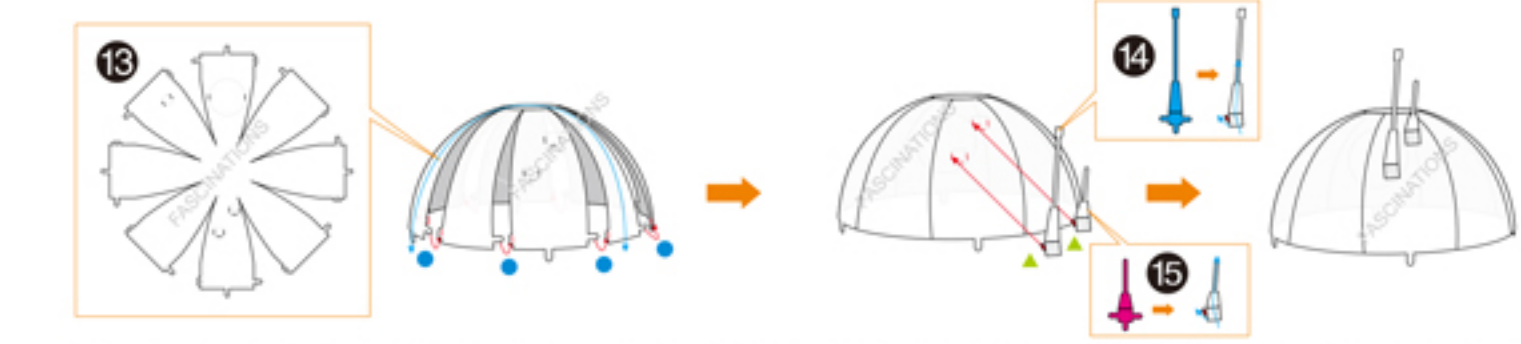
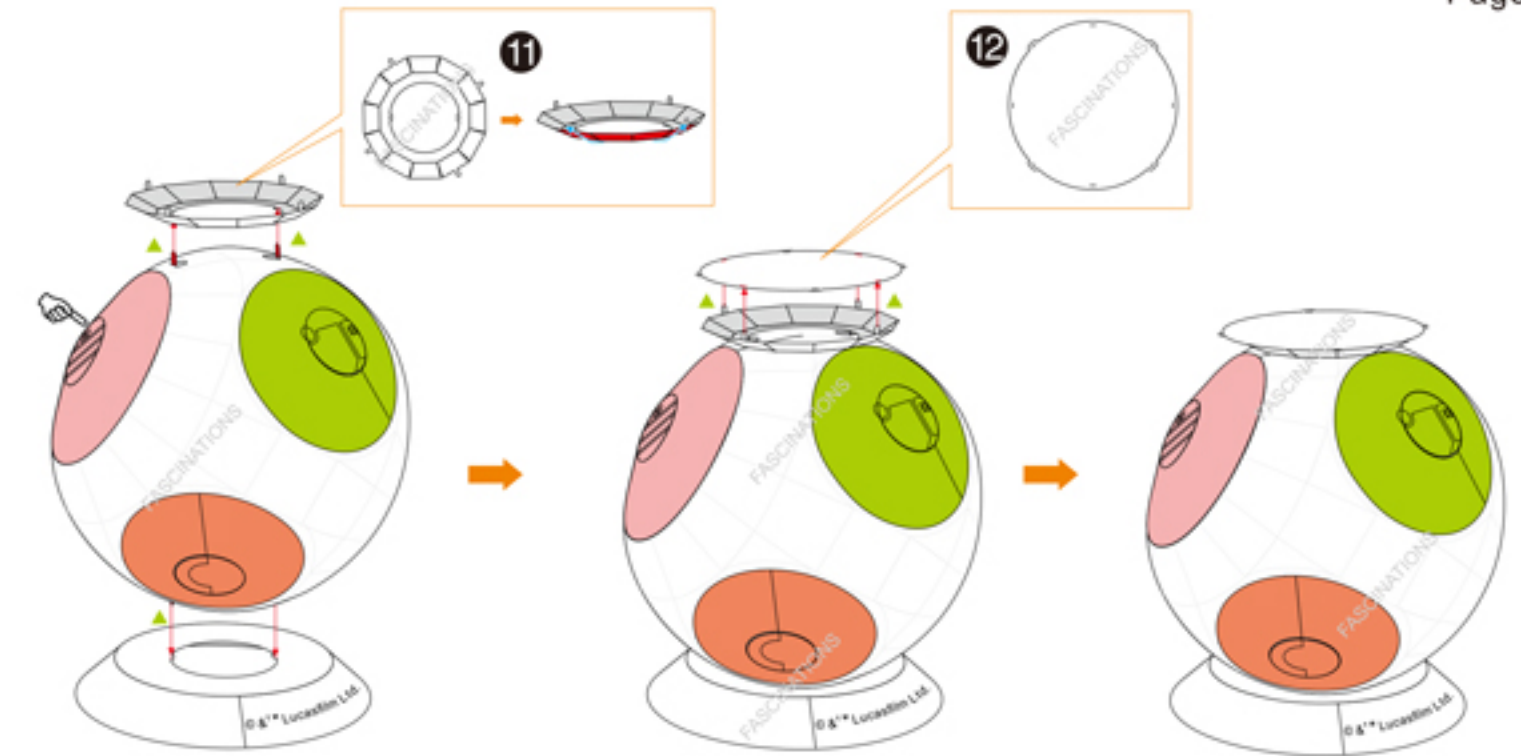
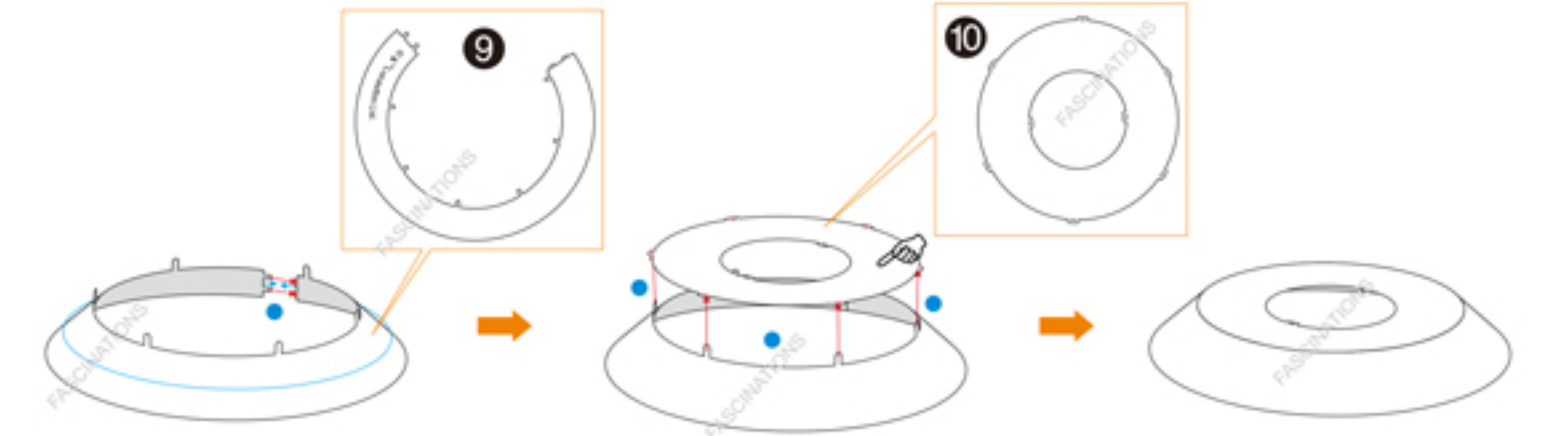
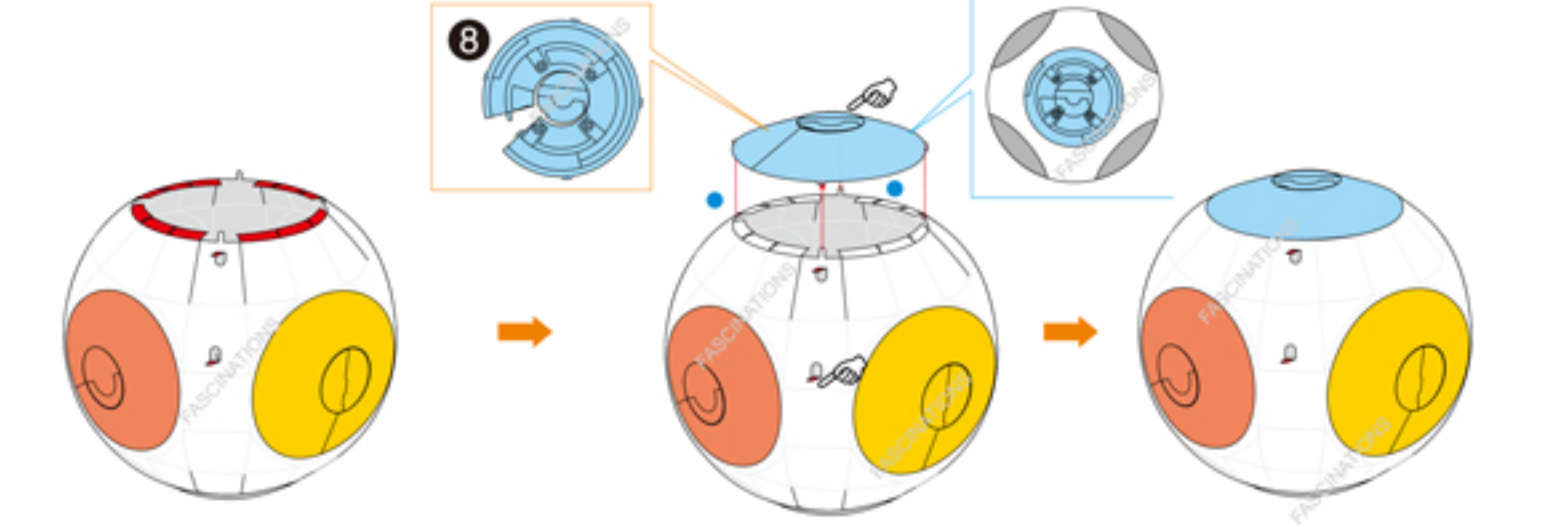
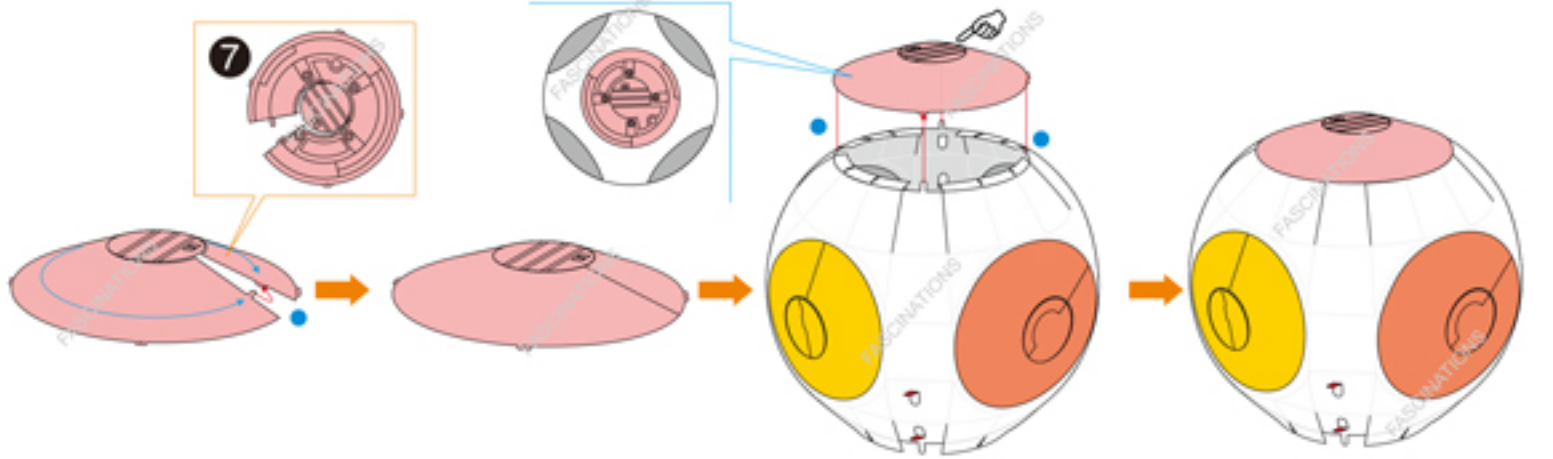
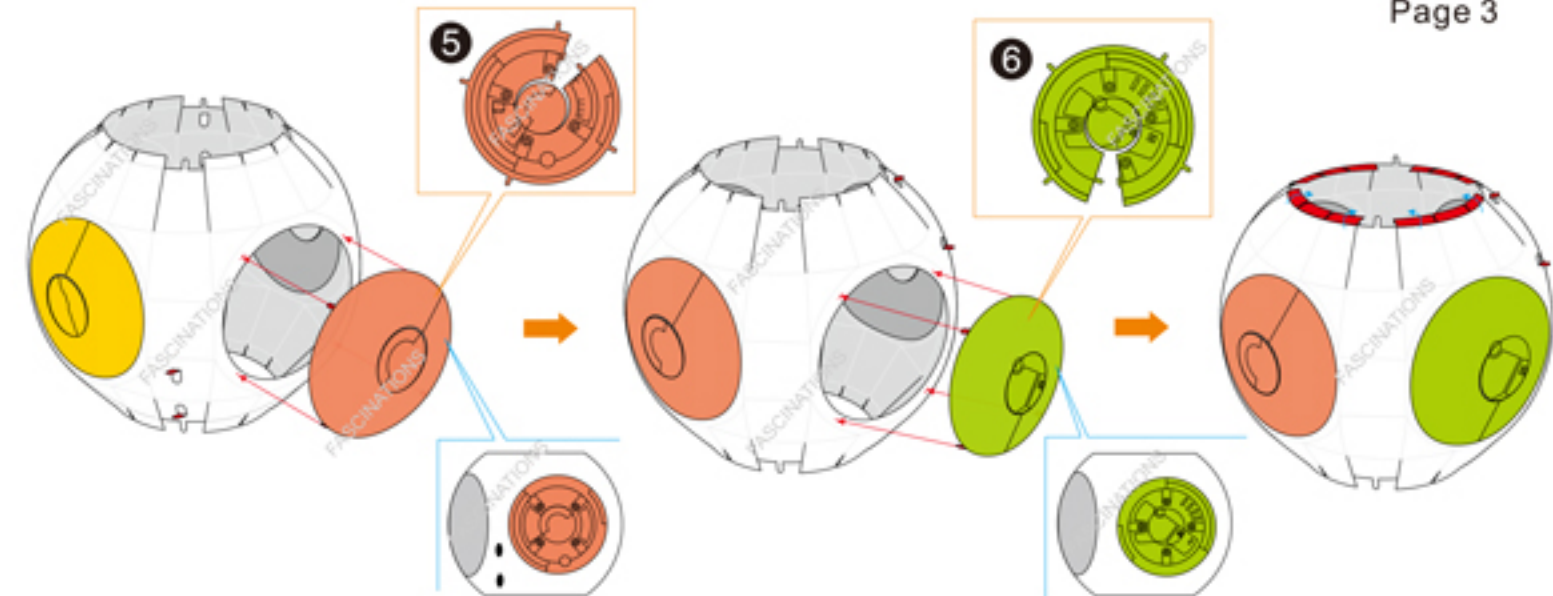
### Metal sheets



In order to avoid possible injury from sharp edges, please carefully discard the metal sheet after parts have been removed

### Assembly Flow Chart





**Fascinations**  
©2017 Fascinations Seattle, WA  
www.metalearth.com

**starwars.com**  
© 2013 Lucasfilm Ltd. & TM.  
All rights reserved.